

**INVENTORS**

NURUL ALYA BINTI ABDUL RAOF  
NURUL NAJWA BINTI YUSOF  
PN. DAYANG KHADIJAH HAMZAH  
PN. FAIZAH ABU BAKAR

**CONTACT DETAILS**

FACULTY OF ENGINEERING TECHNOLOGY  
(ELECTRONIC TELECOMMUNICATION  
AND DESIGN),  
UNIVERSITI MALAYSIA PERLIS(UniMAP),  
KAMPUS UNICITI ALAM,  
SUNGAI CHUCHUH,  
02100 PADANG BESAR,  
PERLIS.

E-MAIL : nurul.alya94@gmail.com  
: wawayusof18@gmail.com

# SMART ALARM CLOCK

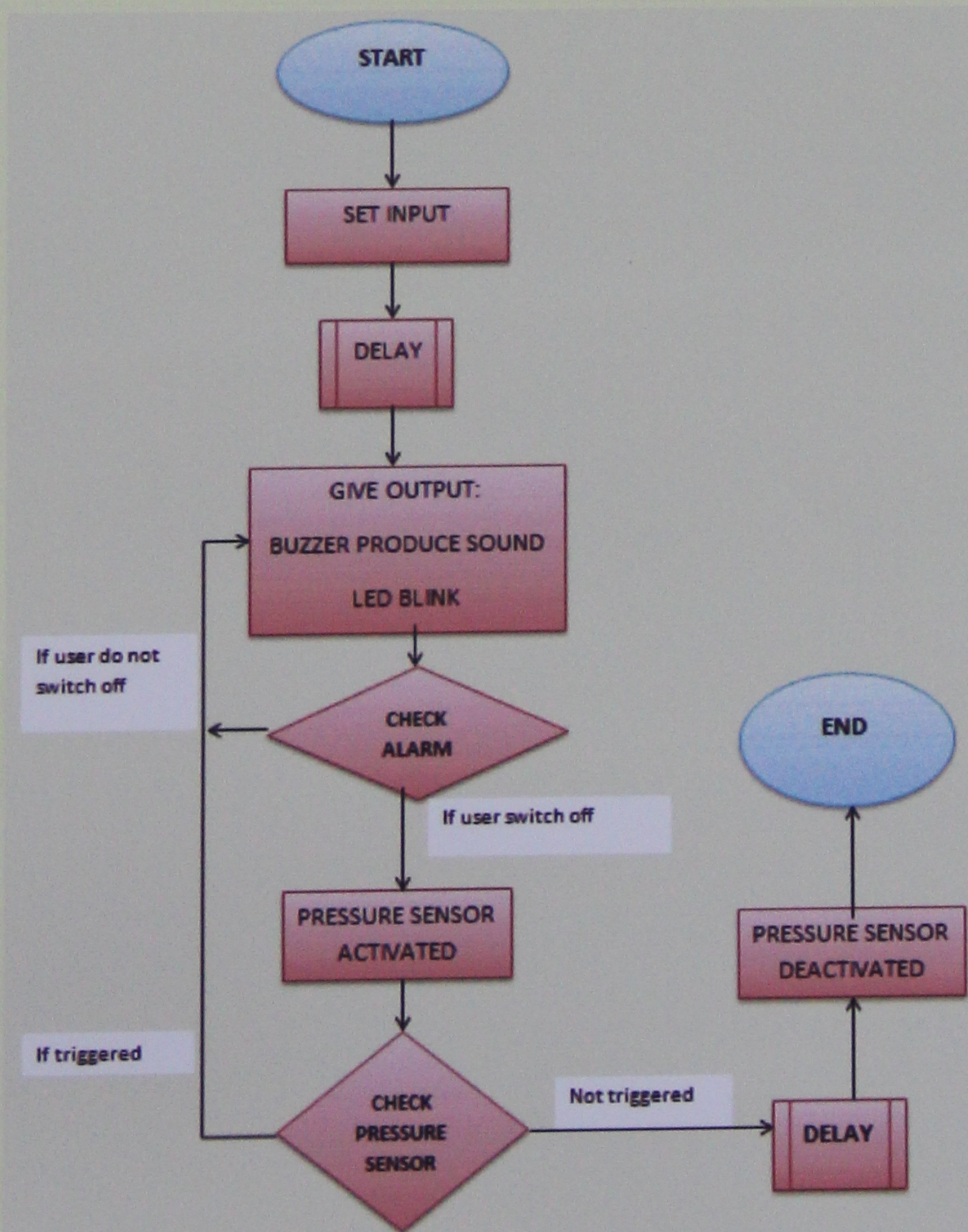
## PRODUCT DESCRIPTION

An alarm clock that triggers a pressure sensor on the bed so the user cannot sleep again after switching off the alarm.

## PROBLEMS STATEMENT

Majority of people does not have problem of waking up, but they wake up to switch the alarm off and then continue sleeping.

## PROCESS FLOW



## PRODUCT ADVANTAGES

- ✓ Easily constructed
- ✓ Low cost
- ✓ Convenient to be used

## POTENTIAL APPLICATION

- Multi purpose clock (timer, alarm,sensor)
- Auto off/on alarm with motion detector

## NOVELTIES

- ✓ Newness of product.
- ✓ The product can be used by any individual.
- ✓ Suitable for all

e.g : family and students

- ✓ Highly recommended for university students to help them waking up for class and for working parents to be punctual for work or not to be late sending off kids to school.

