

# CHARACTERIZATION OF SUGARCANE BAGASSE, RICE STRAW AND RICE HUSK AND THEIR SUITABILITY FOR PAPER PRODUCTION.

Suhardy Daud and Mohd Nazry Salleh  
Lecturers,  
School of Materials Engineering,  
KUKUM.  
Tel : 604-9798609,  
email : suhardy@kukum.edu.my

Farizul Hafiz Kasim  
Lecturer,  
School of Bioprocess Engineering,  
KUKUM.  
Tel : 604-9798754,  
email : farizul@kukum.edu.my

Saiful Azhar Saad  
Lecturer,  
School of Environmental Engineering,  
KUKUM.  
Tel : 604-9798640,  
email : saifulazhar@kukum.edu.my

## ABSTRACT

Various agricultural residues such as sugarcane bagasse, rice straw and rice husk have taken a significant place in supplementing the dwindling supply of conventional forest raw material for catering the ever-increasing demand on the pulp and paper industry. Production of pulp from non-wood resources has many advantages such as easy pulping capability. But the main reasons for the decreased use of these residues in the paper industry is due to the presence of large amount of pentosanes in the pulp and black liquors, which also contain silica. The silica content can limiting the use of the residues in paper mills. In this study, the agriculture residues were characterized by scanning electron microscope (SEM) with using energy dispersive spectrometer (EDS) technique. Results showed that sugarcane bagasse has lowest content of silica, 9.78 % and highest content of carbon, 90.22 % compare to rice straw and rice husk.

## Keywords

Agriculture residue, silica and SEM-EDS.

## 1. INTRODUCTION

Various agricultural residues such as straw, stalk, bagasse and cereal have taken a significant place in supplementing the dwindling supply of conventional forest raw material for catering the ever-increasing demand on the pulp and paper industry [1]. In some countries, their researchers found that the agricultural residues like sugarcane bagasse, leaves and rice straws are suitable raw material for the production of pulp [2].

Sugarcane (*Saccharum officinarum*) bagasse is a residue produced in large quantities by sugar industries. In general, 1 ton of sugarcane bagasse generates 280 kg of bagasse, the fibrous by-product remaining after sugar extraction from sugarcane [3]. However, the utilization of sugarcane bagasse is still limited and is mainly used as a fuel to power the sugar mill [4,5]. These polymers are important for the production of pulp.

Annual world rice (*Oryza sativa*) production was about 577 million tons for 1997 – 98. More than 50 countries contributed to this sum with the production of at least 100, 000 tons of rice

annually. One of the countries is Malaysia. Among these large quantities of agricultural residues (rice straws and rice husks), only a minor portion of the residues is reserved as animal feed. However a huge quantity of the remaining straws is not used and burnt in the fields. The air pollution, therefore is a serious problem by burning these residues in this area. Therefore, the use of these straws in pulping or papermaking has many advantages including reducing the need for disposal and environmental deterioration through pollution and fires [6]. The main reasons for the decreased use of rice straw and rice husk in the paper industry is due to the presence of large amount of pentosanes in the pulp and black liquors, which also contain silica. The need to add alkali to reduce or prevent silicate deposits to remove silica from the black liquors currently limiting the use of rice straws in paper mills [7].

Cellulose, the major constituent of all plant materials, forms about half to one third of plant tissues and is constantly replenished by photosynthesis. In particular, cellulose is the main constituent of higher plants, including sugarcane bagasse rice husk and rice straw. Chemically, cellulose is a linear natural polymer anhydroglucose units. Paper is composed of cellulose fibers. Finished papers may contain natural impurities, such as lignins that have not been removed during processing, unnatural impurities, such as residual chemicals, like sulfites, not washed out during final processing, or such chemicals as alum that have been added during final processing. Lignins, which are the combined glues that hold plant cells together, are undesirable in a finished paper product. They age poorly, turn brown, become acidic over time, are waterproof, and resist the natural bonding of cellulose fibers to each other. If lignins are not removed and are left in contact with the surrounding cellulose fibers in paper, their acidity will break down the cellulose and the paper will become brittle [8].

The objective of this study is to investigate the cellulose or carbon content and silica content of the sugarcane bagasse, rice husk and rice straw. The raw materials are characterized by Scanning Electron Microscope with Energy Dispersive Spectrometer technique (SEM-EDS).

## 2. MATERIALS AND METHODS

Sugarcane bagasse, rice straw and rice husk were obtained from a local factory and farmers in Perlis. The samples were first dried in sunlight and then cut into small pieces (1-3 cm). The cut sugarcane bagasse, rice straw and rice husk were ground to pass a 1.0 mm size screen. To reduce errors and confirm the results,

each experiment was repeated in triplicate under the same conditions and the content of carbon and silica was given as the average of these three replicates. The fiber dimensions analysis were performed using Scanning Electron Microscope (SEM), MODEL JEOL (JSM/6460LA).

## 3. RESULT AND DISCUSSION

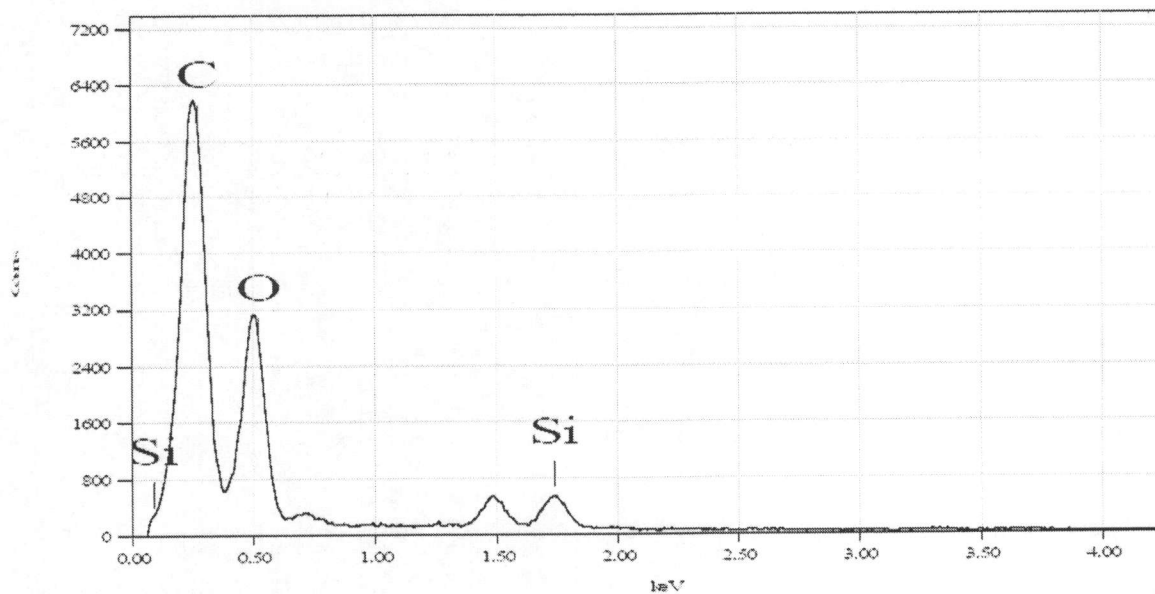


Figure 1 : SEM-EDS micrograph of sugarcane bagasse.

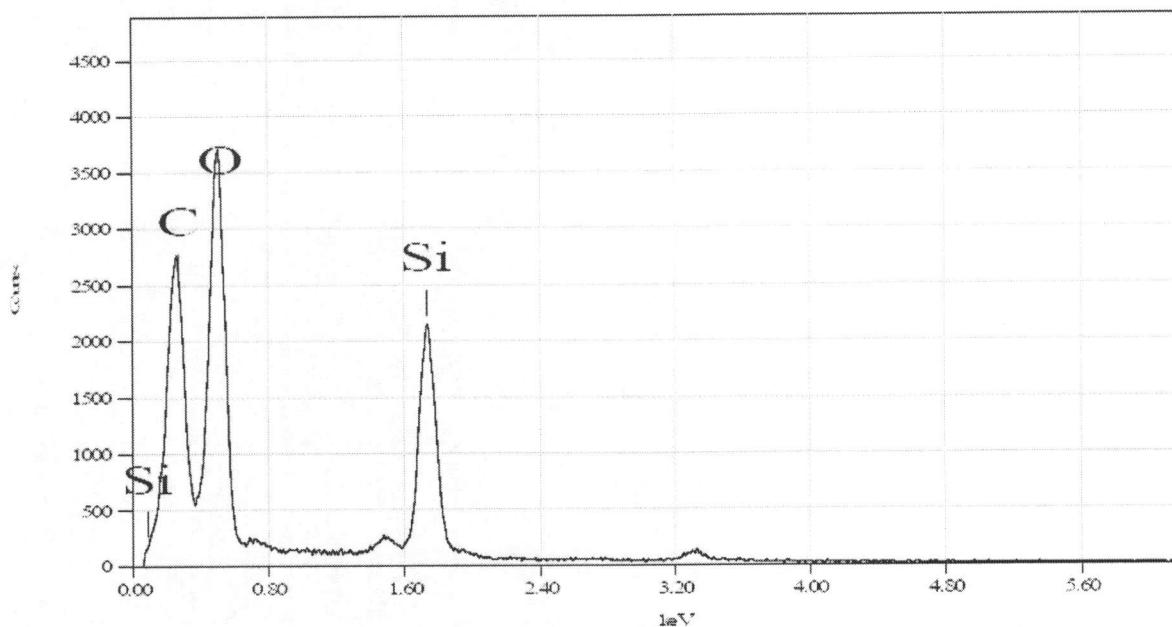


Figure 2 : SEM-EDS micrograph of rice straw.

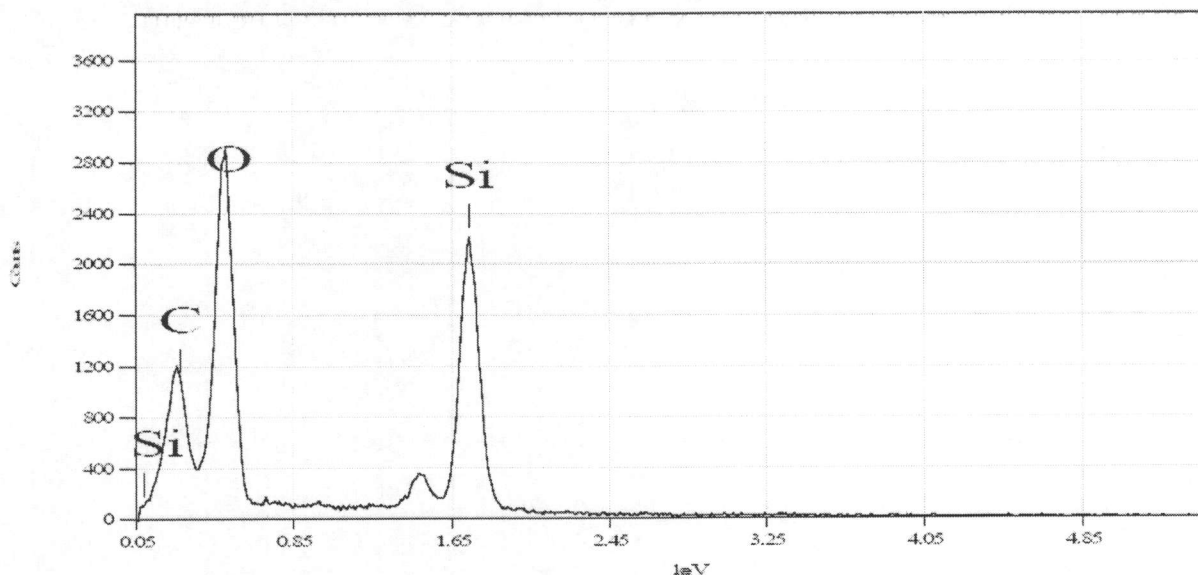


Figure 3 : SEM-EDS micrograph of rice husk.

SEM-EDS micrographs of the sugarcane bagasse, rice straw and rice husk are shown in Figure 1, 2 and 3. Sugarcane bagasse, rice straw and rice husk are fibrous lignocellulosic material typical of most agricultural residues, however, these raw materials are differ from most crop residues in its high content of silica. Paper is composed of cellulose fibers. Cellulose is a carbon polymer of the sugar glucose and is used by plants to produce cell walls. Plant matter that has been processed to create a solution consisting of cellulose filaments suspended in water can be made into paper.

Table 1 : The content of carbon and silica in sugarcane bagasse, rice straw and rice husk.

Raw Materials	Content of Silica (%)	Content of Carbon (%)
Sugarcane Bagasse	9.78	90.22
Rice Straw	36.14	63.86
Rice Husk	51.70	48.30

In this study, the result (Table 1) showed that sugarcane bagasse has 9.78 % content of silica and 90.22 % content of carbon. Besides that, rice straw and rice husk has 36.14 % and 51.70 % content of silica and 63.86 % and 48.30 % content of carbon respectively. It concluded that sugarcane bagasse is more suitable for using as raw material for paper production compare to rice straw and rice husk. It is because high silica content can reduce the quality of paper. These handicaps can cause the need to add alkali to reduce or prevent silicate deposits or install a specific device to remove silica from the black liquors during pulping process. The need to add alkali to reduce or prevent silicate deposits to remove silica from the black liquors currently limiting the use of rice straws in paper mills [7].

#### 4. ACKNOWLEDGEMENTS

The authors are thankful to the Director of the Kilang Gula Felda Sdn. Bhd., Perlis for providing the bagasse samples.

#### 5. REFERENCES

- [1] Bhaduri, S.K., Ghosh, I.N. and Ded Sarkar, N.L. Ramie hemicellulose as beater additive in paper making from jute-stick pulp. *Industrial Crops and Products*. 1995, 4, 79-84.
- [2] Fragante, L.R. and Cruz, L.V. Hand made paper from bagasse and sugarcane leaves. *Proceedings of 45<sup>th</sup> Annual Convention, Philippine Sugar Technologist Association* (Cebu, Philippine. 1998).
- [3] Sun, J.X., Sun, X.F., Sun, R.C. and Su, Y.Q. Fractional extraction and structural characterization of sugarcane bagasse hemicelluloses. *Carbohydrate Polymers*. 2004, 56, 195-204.
- [4] Antaresti, Y.S., Setiyadi, H.W. and Yogi, Y.P. The effect of chemical and biopulping process to bagasse pulp. *Proceeding of RSCE and SOMChe* (Petaling Jaya, Malaysia. 2002).
- [5] Charles, M. and Shuichi, F. Electricity from bagasse in zimbabwe. *Biomass and Bioenergy*. 2003, 25, 197-207.
- [6] Xiao, B., Sun, X.F. and Sun, R.C. Chemical, structural and thermal characterization of alkali-soluble lignins and hemicelluloses and cellulose from maize stems, rye straw and rice straw. *Polymer Degradation and Stability*. 2003, 74, 307-319.
- [7] Hoang, Q.L., Yves, L.B., Michel, D. and Gerard, A. formic acid pulping of rice straw. *Industrial Crops and Products*. 2001, 14, 65-71.
- [8] Sun, J.X., Sun, X.F., Zhao, H. and Sun, R.C. Isolation and characterization of cellulose from sugarcane bagasse. *Polymer Degradation and Stability*. 2004, 84, 331-339.